



LCDC Annual Report 2018

Introduction.

Local Community Development Committees (LCDC's) are required, under the provisions of Section 128B of the Local Government Act 2001, to prepare, adopt and submit an annual report to the local authority, no later than the 31st March each year, in respect of the performance of its functions in the previous calendar year. The annual report should be co-ordinated with the preparation of the local authority's annual report and include an outline of Local Community Development Committee (LCDC) activities in the relevant period.

At a minimum the report should cover each of the LCDC functions, as outlined in the Act, but also other areas of activity such as development, review or implementation of community elements of the plan and contributing to the economic objectives of the Plan, both in its development and implementation.

Functions of the LCDC

The LCDC functions set out in the Act are as follows:

- the preparation and adoption of an LECP,
- implementing the community elements of the LECP,
- reviewing the LECP and amending it or amending any element of it,
- monitoring, and reviewing the implementation of the plan on an ongoing basis,
- co-ordinate, manage and oversee the implementation of community development programmes that have been approved by the Council, agreed between the Committee and a public authority and to ensure that any plans or strategies are implemented in accordance with the community elements of the LECP,
- seeking to ensure effectiveness, consistency, co-ordination and avoid duplication between local and community development programmes,
- pursuing the co-ordination of all local community and coordination of programmes so as to optimise resources for the benefit of local communities and improve efficiency with which public funded local and community development resources are used,
- to consider and adopt a statement in respect of the economic elements of a draft plan and
- not later than 31st March each year adopt and submit to the Local Authority a report relating to the performance of its functions in the preceding calendar year.

Membership.

The membership of the LCDC is 19. In addition Kilkenny LCDC has 1 Associated Member. The composition of the LCDC is such that it brings together the expertise and skills of people actively working with local development, community development and economic, cultural

and environmental organisations and local authority members, officials and state agencies to implement a joined up, cross sectional approach to local and community development programmes.

During the year Mr Fergus Keane's tenure as PPN nominee and as Chair ceased after a period of three years. Kilkenny LCDC is thankful to Mr Keane for his leadership and stewardship of the LCDC throughout his tenure of office. Ms Angela Hayes replaced Mr Fergus Keane as the Social Inclusion nominee.

Ms Loretto O Driscoll retired from her post in Teagasc and she was replaced as the Teagasc nominee to the Committee by Siobhán Kavanagh. Kilkenny LCDC is grateful to Loretto O Driscoll for her many years of service on the LCDC as the Teagasc representative. Cllr David Fitzgerald resigned from the Committee in December and he was also thanked for his service to the committee.

Election of Chair and Vice Chair

At the October meeting and through subsequent correspondence members were briefed on the tenure of office of the current membership and on the procedures involved in the Election of Chair and Vice Chair. At the meeting held on 7th December, Ms Anne Corr was elected as Chair of Kilkenny LCDC for the 3 year period until November 2021. Ms Colette Byrne was elected as Vice Chair for the 3 year period until November 2021.

A full listing of members and their nominating bodies is included in *appendix No 1*.

Role of Chief Officer

The Chief Executive of the Local Authority has a legal obligation to assign staff to assist the LCDC in performing its functions including the assignment of a staff member to the position of Chief Officer.

The Chief Officer has responsibility for carrying out, managing and controlling generally the administration and business of the Committee and for providing ongoing support. In particular the role envisages the facilitation and promotion of partnership and interagency working, managing membership, being a link and conduit between the LCDC and the Local Enterprise Office and SPC 1 and the Department, providing capacity building interventions, pursuing funding streams and broadening the work of the Committee, providing advice and guidance and bringing local authority experience to the Committee.

Mr Michael Delahunty had been assigned to the position in May 2017 and continued in that role throughout 2018.

LCDC Meetings.

The LCDC met on six occasions in 2018 in accordance with the schedule of meetings agreed at the meeting of the LCDC held in November 2017.

Engagement with Stakeholders.

It is the policy of the LCDC to meet Local Economic and Community Plan implementing partners in connection with their LECP actions and to consider issues of mutual concern. During 2017 the LCDC heard presentations from Kilkenny Carlow ETB on its Youth Work Plan for 2018-2022, from Ossory Youth on its implementation of the actions of the Local Economic Community Plan, from Foroige on its work and youth activities in The Drum Youth Centre in McDonough Junction, from Teach Tom and from Lifelinks on its work and programmes and range of and counselling and bereavement support services, from Tulsa on the family resource centre and services and from County Kilkenny LEADER Partnership on the SICAP Annual Plan for 2019.

Local Economic and Community Plan. (LECP)

The LCDC monitors and reviews the implementation of the Local Economic Community Plan on an ongoing basis and in doing so it considers the reports and advice from the LECP Advisory Group.

The Community Implementation Plan for 2018-2019 is being implemented by 23 stakeholders and includes 88 actions. Some of the actions identified by stakeholders are a continuation of the actions identified as part of the consultation process undertaken in 2015 when the LCDC were developing the plan, others are new actions.

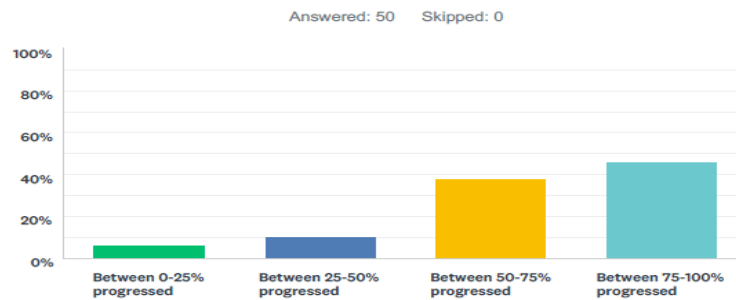
All actions have been identified by each of the 23 stakeholder agencies in a workshop that the LCDC organised on the 1st December 2017 as part of a collaborative approach to reviewing and implementing the Community Plan.

Six Monthly Reviews

The first reporting period January- June 2018 yielded 50 of the 88 actions being reported on or 57% of the actions. 13 of the 23 stakeholders involved in the delivery of the Community Plan responded; this was a response rate of 57%.

Summary of overall progress for the 50 actions reported on:

Q4 Rate your progress on a scale of 0-100%



ANSWER CHOICES	RESPONSES	
Between 0-25% progressed	6.00%	3
Between 25-50% progressed	10.00%	5
Between 50-75% progressed	38.00%	19
Between 75-100% progressed	46.00%	23
TOTAL		50

Progress on actions is high with 23% of the actions for 2018-2019 implementation plan between 75 and 100 % complete. Other key positives were the high success rates identified by lead partners with 58% recording their actions as being very successful with regards their expected outcomes.

A copy of the six monthly progress reports for the period to 30th June 2018 has been made available through Kilkenny County Councils website. The report for the reporting period to 31st December 2018 will be available from March 2019.

LECP High Level Strategic Actions and Thematic Areas

A review of the 88 LECP implementation actions was undertaken in 2018. It was noted that most of the 88 actions now form business as usual for the 10 implementing agencies. Kilkenny LCDC decided to prioritise a number of actions for its work programme for 2019 as follows:

- Action 10.2.19- 4 Family Resource Centres (FRC’s) providing education programmes to 250 disadvantaged individual per year.
- New Action/Opportunity-Seek to expand the number of FRC’s in the County
- Social Inclusion Community Activation Programme. (SICAP) Action that Builds on expositing practice:
- Kilkenny LCDC -Host annual LECP Stakeholder Workshop
- Action 10 1.1. A+B+C = Supporting the roll out of National Rural Development Schemes requiring Community Engagement such as Town & Village Renewal, RAPID, Community Facilities, CLAR, Healthy Ireland Fund etc.

- Action 10 1.2 & 1.3 = Developing the Socio Economic Plans for Callan, Ferrybank, Castlecomer, and local needs analysis for Disadvantaged areas-Urlingford, Johnstown, Graiguenamanagh, Goresbridge, Callan, Kilkenny Urban 1 &2.



Social Inclusion and Community Activation Programme. (SICAP)

The aim of SICAP is to tackle poverty, social exclusion and long-term unemployment through local engagement and partnership between disadvantaged individuals, community organizations and public sector agencies. SICAP provides national funding for local actions to tackle social exclusion, with the responsibility on local implementers to design and deliver the most appropriate types of interventions, initiatives and projects for each Lot. The programme targets disadvantage both at an individual level and at a community group level. Kilkenny LCDC manages the programme for County Kilkenny (Lot 7) and is the key decision maker in terms of annual planning, monitoring and oversight.

SICAP Contract for the period 2015-2017.

County Kilkenny Leader Partnership clg was the programme implementer in respect of the period 2015-2017. The annual value of the contract, excluding vat was € 608,000. 2017 was the third year of the 3 year SICAP programme 2015-2017. During the year, with the assistance of the SICAP subgroup and the Programme Implementer, the end of year review was satisfactory undertaken. The LCDC was satisfied with the performance of the contract.

The LCDC was informed that the Key national statistics emerging from SICAP 2015-2017 were as follows:

- The total budget was €103m.
- A total of 47,500 individuals and 3,076 Community Groups were assisted.
- The EU Commission and has commended the Programme.
- The Irish Human Rights & Equality Commission endorsed the programme.
- Consultation Process undertaken -Listened to and taken on board.
- The new programme will be developed against the background of a changing Economic Climate -Unemployment Levels falling, Labor Force Increasing, Third Level attendance increasing, Changing Policy Content.

SICAP Contract for the period 2018-2022

A new Social Inclusion and Community Activation Programme was introduced late in 2017 in respect of the 5 year period 2018-2022. It replaced the programme for the period 2015-

2017. The aims are the same-to reduce poverty, promote social inclusion, through collaboration, equality and respect for human rights.

The new programme included a number of significant changes from the previous programme as follows:

- The programme duration is 5 years-the previous programme had duration of 3 years.
- The indicative budget for 2018 was €38m p.a. which is an increase of €0.5m on 2017
- Three Core Themes must be visible in the tender-Community Development, Equality and Collaboration
- There is a significant reduction in number of Key Performance Indicators (KPI's) to 2
 - -KPI 1 is ***Number of Community Groups Supported***
 - -KPI2 is ***Number of Individuals supported***

This reduction reflects the feedback from the consultative process that targets should be substantially lower so as to allow for a more intensive engagement with fewer beneficiaries. The focus is on the quality of the engagement rather than on numbers. A Qualitative measurement tool is being piloted at present. Following a competitive procurement process County Kilkenny LEADER Partnership, clg, was awarded the contract by Kilkenny LCDC.

Mid Year Review

A Mid Year review of the contract, including the IRIS system details, was undertaken and a full report was presented by the SICAP Sub-Group to the LCDC at the July meeting. The LCDC was satisfied that no issues of significance were presenting and that the performance of the contract was satisfactory. Issues concerning data input to the new IRIS system will be addressed at a follow up meeting with the Programme Implementer.

Case Studies

The SICAP Sub-Group considered the request from Pobail for Case Studies. Following consideration of a comprehensive report on the matter Kilkenny LCDC decided to submit 3 to Pobail as follows:

Goal one: Supporting Communities

- Kindred – Community Arts Collective
- Collaboration Business, Community Development and Social Inclusion led Regeneration of a Rural Town in County Kilkenny – Community Development & Social Enterprise Animators; a collaborative approach in Castlecomer and Graignamanagh.

Goal Two: Supporting Individuals –

- “What’s Next? Programme

Emerging Needs

LCDC Annual Report 2018

The LGBTI group was named as an emerging needs group for 2018 but the work has not progressed as far as was expected under SICAP. The lack of progress is due mainly to historical issues left over from the PINK group which had been the gathering of people that organised around LGBT issues and the Out for the Weekend Group – a largely social group - has dispersed as members became busier with work and more involved in other/wider social projects. It was noted that Ossory Youth has been carrying out some very good and concentrated pieces of work with young people in this area.

It was noted that visibility of the LGBTI community in the county and city is low despite the reputation of the city for being open, creative and ahead of others in the region in socio-economic terms. This leaves a considerable gap in social reference points for people who are less well integrated. Not having a forum leaves a gap in seeing where more disadvantaged LGBTI people might be in our communities; the barriers they face and opportunities they might have missed.

Following consideration of this matter was decided by the LCDC to specify LGBTI under the emerging needs category in the SICAP plan for 2019.

Local Economic Community Plan (LECP) Advisory Committee

The role of the LECP Advisory Committee is to have oversight of the actions to be covered respectively by the economic elements and the community elements of the LECP, to monitor performance, take account of the need to reduce duplication, provide clarity as to where responsibility rests for leading/coordinating actions and to report to the LCDC and SPC1 on any barriers encountered. Membership comprises of 3 representatives from the LCDC and 3 representatives from SPC1.

The Committee met on two occasions in 2018 and considered the progress being achieved in implementing both the Community and the Economic elements of the Local Economic Community Plan, the implementation of the Castlecomer community plan, a review of the County Retail Strategy and the mapping of community funding in the County for the past 5 years. Members were informed that no barriers were identified that would impede the implementation of actions under the Local Economic and Community Plan.

Public Participation Network (PPN)

The PPN representatives on the LCDC reports to the LCDC at each of its meetings on citizen engagement and social inclusion.

In 2018 it reported the following:

Membership

The PPN membership has now reached 279 members which is an increase from 249 groups at 31st December 2017. The following is the breakdown of membership of the three pillars:

Community: 199

Social Inclusion: 69

Environmental: 7

Capacity Building Grants.

The LCDC was informed that the PPN had provided €6,800 in financial support for Community Capacity Building events over Yulefest 2017. In 2018 €5,800 was provided to 10 community groups through Christmas Capacity Building Funding. Most events are linked with the Yulefest festival in Kilkenny.

Kilkenny Access for All Strategy 2018-2021

The PPN led and funded the preparation of a 3 year strategic plan in relation to universal access in Kilkenny entitled the “**Kilkenny Access for All Strategy 2018-2021**”. Through a sub-committee “the Kilkenny Universal Access for All Committee” the PPN engaged with the services of Eoin O’Herlihy Consultants in developing the Strategy. Training workshops were held and 48 people attended from amongst disability service users, older adult’s services, training providers, private and public businesses/services and anyone that had expressed an interest in the area of access.

The Kilkenny Access for All Strategy 2018-2021 was launched on the 15th October at 9.30am, in the Medieval Mile Museum, by Minister John Paul Phelan. The strategy takes a broad view of access in terms of access to services, training and information.

A number of public consultations have informed the development of the strategic Action Plan detailing the key steps for four identified main objectives.

It aims to address barriers by working collaboratively with stakeholders to take small achievable steps that will contribute to stronger, healthier communities.

The Strategy includes

- A training/awareness programme with services and businesses in Kilkenny
- The development of useful resources
- A recognition award for participating services/businesses

- A mechanism for highlighting issues of concern and reporting them to the relevant authority
- Online information and grant signposting

Kilkenny County Council is leading the way by commencing the first round of the training/awareness programme for approximately 50 staff members in County Hall. The programme continues to be rolled out with interest being expressed by staff of St Luke's Hospital. It is intended to continue to roll out this short programme to as many services and businesses as possible over the next year with particular emphasis on Customer Service and Frontline staff.

Community Connects Conference

The PPN worked collaboratively with Warren Consulting to bring the Community Connects Conference to Kilkenny. The Conference took place on the 10th of October in the Ormonde Hotel, Kilkenny. This conference was aimed at the Community, Charity and Voluntary sectors. Key note speakers were John Farrelly, CEO of the Charities Regulator and Shane Doyle, Vice President of corporate citizenship with State Street. Workshops in areas such as change management, social enterprise, governance and fundraising took place throughout the day. This conference was jointly sponsored by the PPN and State Street.

Training and Development

The Joint CKLP and PPN Community Development Course that ran during 2017 was successful and 14 participants completed the non accredited foundation course. It was run again in 2018 with 22 participants completing the course in.

GDPR (General Data Protection Regulations) training was undertaken for communities in April/ May and was well attended.

Governance training aimed particularly at small member groups was developed and took place in June at Castlecomer Library, Old Loughlin Court in Kilkenny City and in Hills Field Community Centre Ferrybank. The course covered all aspects of governance, officer roles and basic requirements of GDPR. All groups were given policy templates for their organisation in line with good governance.

PPN Plenary

2 plenary meetings were held for all members in 2018, the first of which was held in May. Guest speakers including Anne Marie Walsh, Senior Executive Officer Corporate Affairs, who made a presentation on the role and functions of the SPC's and of Council's executive; Bryan Tyrell, Tourism presented on Community tourism hubs; and PPN Committee representatives also presented their experiences of their respective committees. The Second took place on

Thursday 22nd of November in the Ormonde Hotel, Kilkenny. Speakers included Theresa Delahunty, Kilkenny Immigrant Services and Angela Hayes, Teach Tom. A Questionnaire circulated at the plenary requesting feedback and suggestions pertaining to the 3 pillars- Community, Social Inclusion and Environment which will inform will inform the 2019 work programme.

Departure of Katherine Peacock and Appointment of Margaret Whelan

The Committee was informed that Katherine Peacock, PPN Development Officer, has taken up a new post as the Civil Defence Officer for Kilkenny. Katherine continued on in a part-time capacity with the PPN until a replacement has been appointed to avoid any disruption to the PPN. The Committee members of the LCDC offered their appreciation of Katherine Peacocks' great work and contribution to the PPN and wished her well in her new role.

Margaret Whelan was appointed at PPN Development Worker with effect from 6th November 2019.

Additional Support Worker

The PPN was informed that confirmation has been received from Department of Rural and Community Development that additional funding has been allocated for the provision of a support worker to the PPN. The recruitment process had commenced at year end.

Resettlement Programme

Under the Irish Refugee Protection Programme the Irish Government has pledged to offer safety and protection to approximately 4000 asylum seekers/refugees. The Programme commits Ireland to offering families and children, who have been compelled to leave their homes due to war and conflict, a place of safety.

As part of the Irish Government's commitment to provide safety to those fleeing war, conflict and persecution Kilkenny County Council was approached by the Department of Justice and Equality to form part of this response and provide assistance with the resettlement of 140 refugees into County Kilkenny during 2017 and 2018.

To this end Kilkenny County Council established a Statutory Interagency Resettlement Committee to coordinate and respond to the initial needs of families being resettled in Kilkenny. Kilkenny County Council was awarded €338,335 to implement a Resettlement Programme over 2018-2019. The programme was contracted to Respond Support with a Resettlement Worker and Intercultural Worker providing the main elements of the

programme. Over 2018 the Statutory Interagency Resettlement Committee were involved in resettling 20 families (116) people in communities across Kilkenny.

South Sudanese Kilkenny Community 10 Year Celebration

On the 28th of August 2018 the Sudanese community in Kilkenny celebrated their 10 year anniversary. In the summer of 2008 Kilkenny received 11 families from Sudan who had been living in settlements in Uganda. Cllr Eamon Aylward Cathaoirleach of Kilkenny County Council officiated the celebration event in the parade Tower and highlighted the progress that has been made by the families that have made Kilkenny their home. The families have grown from strength to strength not only in population size but in relation to building their lives here.

- The Sudanese community in Kilkenny boasts a population of 103 in 2018; 16 babies have been born and 16 family members arrived under the family reunification programme.
- 11 members of the community have graduated with Honour Degrees from various universities across Ireland.
- There are 13 member of the community currently in university or college.
- 6 young people complete their Leaving Certificate last year and are looking forward to college placements.
- Many have found employment and many are involved in community activity including the PPN.



Celebrating 10 year anniversary

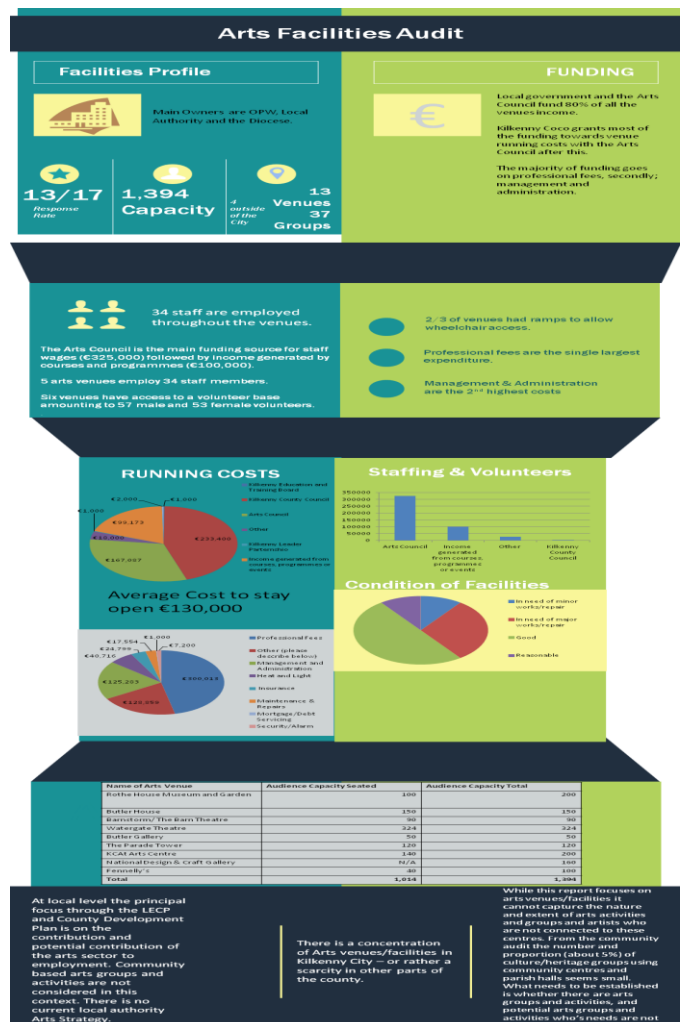
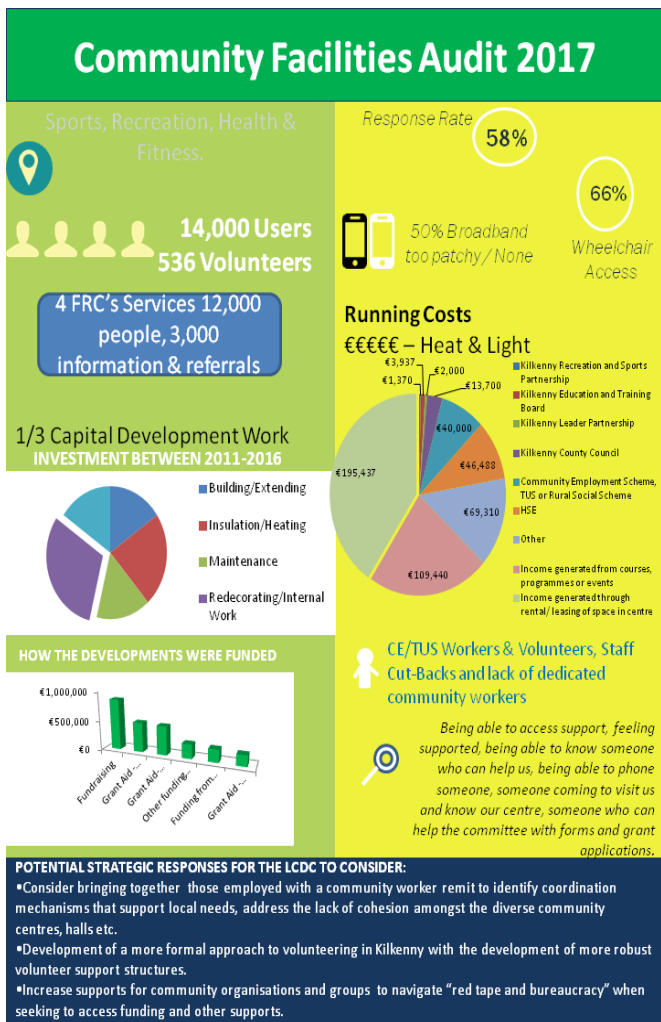
Mapping of Funding awarded to community groups.

The LCDC, at a workshop held previously, had agreed to undertake a mapping exercise that will analyse allocation of resources, identify gaps and identify links between gaps and levels of need and of engagement. Significant amounts of information were gathered in relation to grants awarded over the past 5 year period from 14 Kilkenny County Council departments. 26 funding streams had been identified. The identification of GIS Co-Ordinates for each grant award location and the county wide mapping of the data gathered were largely undertaken in 2018 and will be complete in Q1 2019.

The work undertaken to date refers to Kilkenny County Council data and the exercise was extended to other community grant awarding Agencies. A task force was set up to progress the initiative and secure buy in from all relevant LECP partnering agencies. The work will continue in 2019.

Audit of Community Arts Sports Facilities

The main findings of the Audit of Community, Arts and Sports Facilities was presented to the LCDC at the 17th May meeting. The report was deemed to be an important piece of work with regards gaps in provision of facilities across the county as well as signposting where funding for communities should be concentrated. The facilities identified in the audit will be mapped and available online in 2019.



Code of Conducts and Declarations of Interests

The Chief Officer issued Codes of Conduct to all Members in 2018. The Chief Officer also issued to and obtained from each non Local Authority member a Declaration of Interests during the year. It was noted that the Kilkenny County Council representatives on the LCDC had already been covered by the annual Interest Declarations as issued by the Councils Ethics Registrar.

Community Funding Schemes.

The LCDC is the conduit through which national community funding initiatives are developed and implemented.

In 2017 the following schemes were implemented:

Community Enhancement Programme Funding

The Community Enhancement Programme (CEP) was a new programme for 2018. It built on and replaced the Communities Facilities Scheme and the recast RAPID programme, which launched in 2017. The Scheme provided funding to communities across Ireland to enhance facilities in disadvantaged areas. The Scheme is funded by the Department of Rural and Community Development and administered by the Local Community Development Committees (LCDCs) in each Local Authority area.

The programme provides funding to address disadvantage as identified in the Local Economic and Community Plan (LECP) and is targeted towards enhancing community facilities for individuals and communities that are impacted by disadvantage as identified in the LECP

Kilkenny LCDC received an initial allocation of €136,300 followed by top-up allocation of €144,886. The total sum awarded therefore was €281,186. The LCDC Sub Group assessed all applications and decided to recommend 49 awards in total. The LCDC approved the recommendations.

Men's Shed Funding

At the end of July the Local Authority were informed by the Department for Rural and Community Development that funding was being provided under the Community Enhancement Programme for Affiliated Men's Sheds in each County. Kilkenny was allocated a budget of €8,696. The 6 Men's Sheds in the County that are affiliated to the National Men's Shed Association applied and were awarded funding.

A full schedule of the awards made under the Community Enhancement Programme was published on Kilkenny County Council's website and on the Departments website.

Healthy Ireland Fund

The Scheme of funding which had been made available to the LCDC in 2017 to fund initiatives under the Healthy Ireland programme was continued in 2018. The LCDC had appointed a sub group to develop proposals and make applications to the Department via Pobail. A similar scheme was also made available to the local Children and Young People Services Committee (CYPSC) .The LCDC sub group and the CYPSC group worked together to develop proposals so as to co-ordinate projects and maximise the allocations.

The sum of €74,000 was awarded to the Kilkenny LCDC in respect of 5 projects as follows:

- **Regional Health and Wellbeing Training and Awareness Programme** -including programmes on Sexual Health, Community Cook It and Tobacco Free. **Implementer:** Tipperary County Council on behalf of 5 LCDC in the South East Region,
- **Natural Connections**-Developing the six sessions to link in with the PE, SPHE & CSPE subjects, Co-opt 2 Schools/Disadvantaged Youth Groups from Kilkenny County through Ossory Youth & Kilkenny Leader Partnership. **Implementer** : Castlecomer Discovery Park,
- **Little Buddies**-Provision of 12 buddy benches across 12 preschool settings : **Implementer** Buddy Bench Ireland
- **Healthy Inclusive Communities**- Continue the rollout of the Healthy Inclusive Communities Initiative, Establishment of Healthy Inclusive Communities steering committee of key partners and provision of a Sport Development Officer to support the programme, **Implementer** : Kilkenny Recreation and Sports Partnership
- **Be Healthy Be Happy Kilkenny**- Health and Well-being Summer programme, **Implementer:** Foróige
- **The Healthy Ireland Community Plan** undertaken under the first healthy Ireland Fund initiative in 2017 was launched in May 2018 and forms the basis for the funding of healthy Ireland actions under the Annual Healthy Ireland Fund.
- **The full plan can be found at**
[:https://www.kilkennycoco.ie/eng/Your_Council/LCDC/Healthy-Ireland-Community-Plan.html](https://www.kilkennycoco.ie/eng/Your_Council/LCDC/Healthy-Ireland-Community-Plan.html)

Information Sharing

The provision and sharing of information to LCDC members is a standing item on the agenda of LCDC meetings. In 2017 information was provided on the CLÁR Scheme where Kilkenny County Council made funding applications for 11 projects and were approved €303,465 for 11 projects, on the Town and Village Renewal where Kilkenny County Council sought funding for 7 projects and were approved € 652,280 in funding for 5 projects, on the Councils Community and Culture Facilities Capital Grant Scheme where 8 projects were awarded a total of €250,000 and on the allocation of € €6,900 by the Department of

LCDC Annual Report 2018

Children and Youth Affairs (DCYA) in respect of innovative play area in respect of Woodstock Gardens Outdoor Classroom.

In addition Members were briefed on the success of Kilkenny County Council in securing approval to funding under the Rural Regeneration and Development Fund, in respect of the Fair Green and Motte Fields projects in Callan and also to the funding approval under the Urban Regeneration and Development Fund in respect of the former brewery site in Kilkenny City. Members were also briefed in relation to the various applications made under the fund in respect of Thomastown, Callan, Graiguenamanagh, Piltown and Castlecomer and that decisions will be made on these applications in Q1 2019.

END.

Appendix 1.

LCDC Membership at 31st December 2018.

Name of Member	Nominating Body/Group
Fiona Deegan	Local Enterprise Office
Siobhán Kavanagh	Teagasc
Eileen Curtis	Education Training Board
Mary Barron	Dept of Social Protection
Vacant	Elected Representative
Andrew McGuinness	Elected Representative
Gerard Frisby	Elected Representative
Mary Hilda Cavanagh	Elected Representative
Elizabeth Dermody	PPN-Community Pillar
Angela Hayes	PPN-Social Inclusion Pillar
Eileen Ryan	PPN-Social Inclusion Pillar
Anne Corr	PPN-Social Inclusion Pillar
Sheila Donnelly	Family Resource Centres
Niall McManus	PPN-Environmental Pillar
John Bambrick	Irish Farmers Association
John Hurley	Chamber of Commerce
Denis Drennan	County Kilkenny Leader Partnership
Colette Byrne	Chief Executive Kilkenny County Council
Declan Gibbons	PPN-Community Pillar
Derval Howley	Associate Member – HSE

END.