

# Kilkenny Central Access Scheme

## Summary of Archaeological Actions



# Archaeological Assessment

Submitted to Kilkenny Co Co & Department Arts  
Heritage & Gaeltacht in Oct 2007

Included:

- Comprehensive review of archaeological & historical sources
- A study of all historic maps of project area
- Detailed field walking site inspections



# Consultations & Meetings

- From Oct 2007-Apr 2008
- Meetings with An Taisce, Kilkenny Archaeological Society, & the Heritage Council





# Environmental Impact Assessment

- May 2008 Original EIS submitted to An Bord Pleanála
- Dec 2008 Oral Hearing



# Revised EIS

- Jan 2009-Aug 2011
- Changes to original project design
- Oct 2011 Revised EIS submitted to An Bord Pleanála
- Dec 2011 An Bord Pleanála approved KCAS



# Consultations with National Monuments Service

- Mar 2012-Apr 2012 discuss mitigation measures in line with An Bord Pleanála directions
- May 2012 applied for Ministerial Order, Excavation Licences & Survey Licence





# Archaeological Testing at Vicar St

- Aug 2012
- Trenches excavated in at Vicar St / St Canice's Place junction
- Possible wall & compacted floor surface & medieval pottery sherds





# Archaeological Testing at Diageo Ltd

- Sept 2012
- Over 100m of linear test trenches
- Evidence of 18<sup>th</sup>-19<sup>th</sup> century buildings 1.4m below existing concrete yard





# Archaeological Testing (other locations)

- Aug 2012
- Test trenches were excavated at Wolfe Tone St / Greensbridge St & Peacepark
- No archaeology was identified





# Archaeological Monitoring

- Aug 2011- Sept 2011
- Monitoring of test pits at Padmore & Barnes, the Cattle Mart, and Castlecomer Rd
- No archaeology was identified





# Further Archaeological Work

- Survey of southern gable wall of No.22 Vicar St
- Archaeological monitoring of deconstruction of No.20-22 Vicar St
- Archaeological Test Trenching in footprint of No.20-22 Vicar St
- Archaeological monitoring of construction stage work

# Kilkenny Central Access Scheme

Summary of Architectural Investigations  
20-22 Vicar Street





# 20-22 Vicar Street



20

Derelict house

21

Flats

22

Noreside  
Resource Centre

# Site inspections

- 5<sup>th</sup> March 2008 – opening up walls, no. 20
- 12<sup>th</sup> March 2008 – opening up walls, no. 22
- 25<sup>th</sup> September 2012 – photo surveys of 20 & 22
- 16<sup>th</sup> November 2012 – surveys of 20 & 22
- 8<sup>th</sup> February 2013 - measured surveys, 20, 21 & 22
- 18<sup>th</sup> February 2013 - measured surveys 22

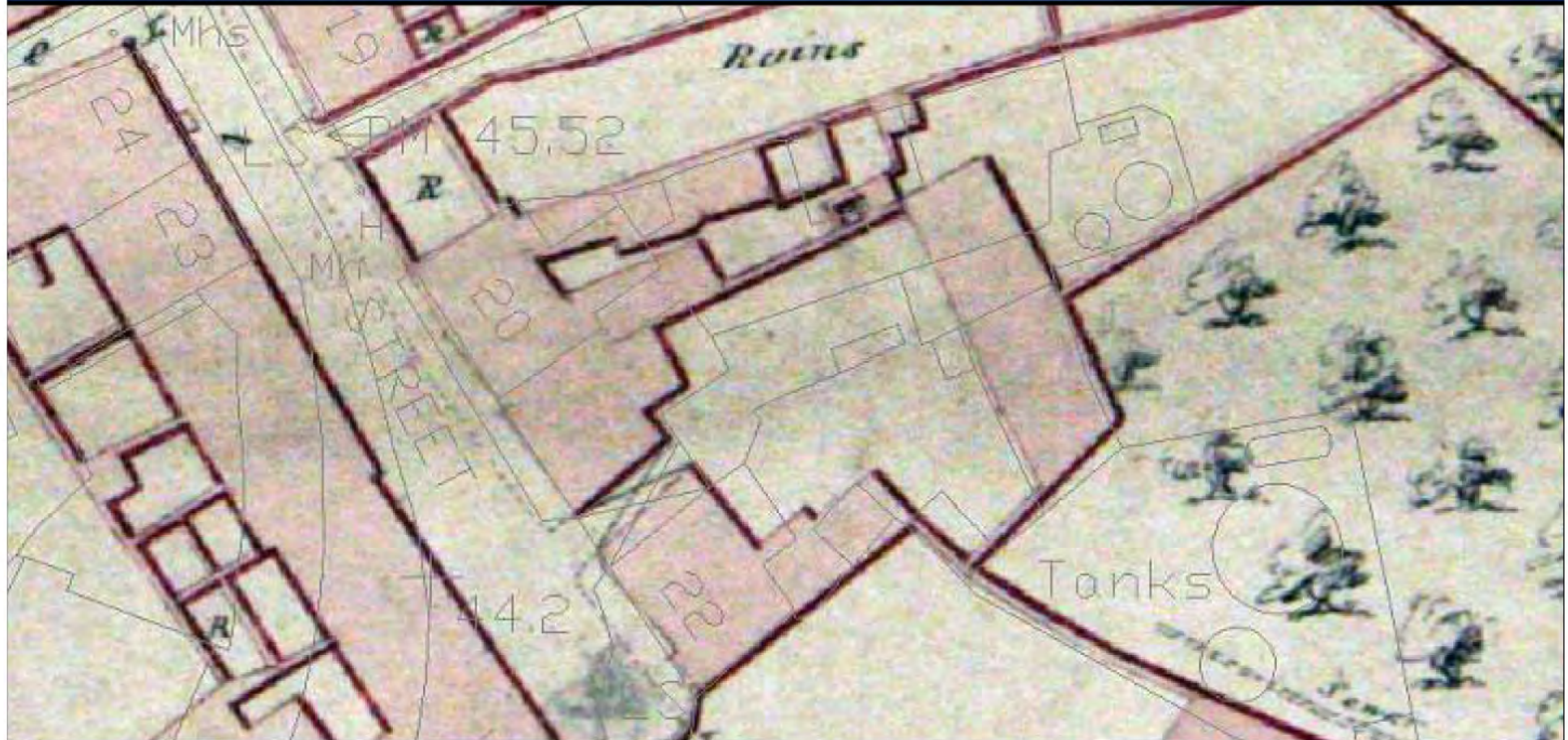


# Historical background

- Site is within medieval core of Irishtown
- Probably buildings on site from 13<sup>th</sup> century
- Buildings on site in 1758 – Rocque's map
- Site redeveloped some time after 1860



# 1841 Ordnance Survey



Three houses on site of 20 & 21 Vicar Street  
– different shapes to today



# Architectural evidence

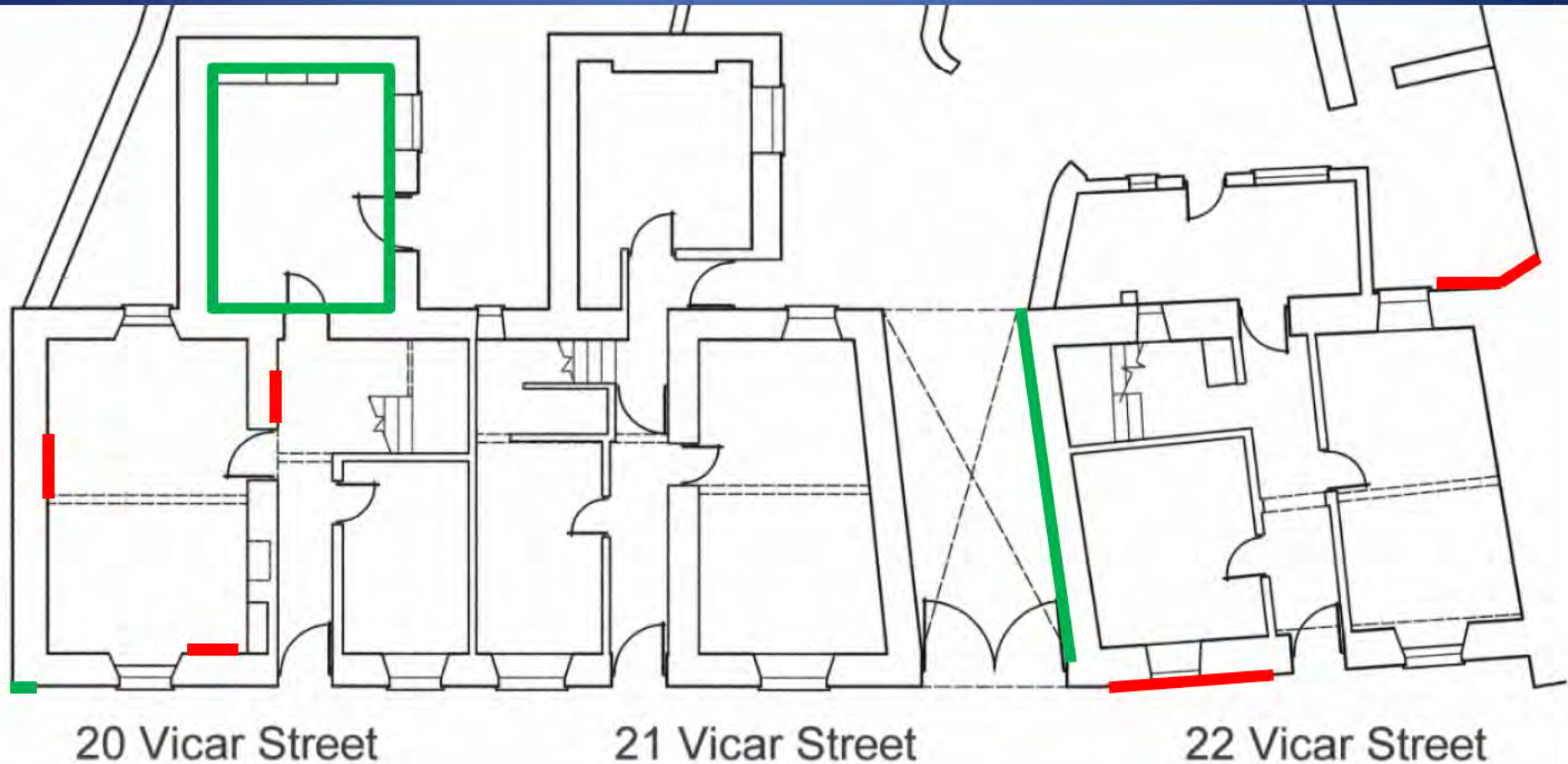
- Facades of all three houses are the same:
  - 21 is mirror image of 20 & 22, but with arch
  - Windows same size
  - Windows and doors almost identical positions
- Suggests construction at same time
- Historical evidence for construction after 1860


# Opening up

- Brick is extremely rare in medieval buildings in Ireland
- First use of brick in any quantity is late 16<sup>th</sup>/early 17<sup>th</sup> century
- Presence of brick fragments in any quantity in masonry suggests that the rubble has been reused from an earlier building that was no earlier than that
- All areas investigated in Vicar Street had significant amounts of brick fragments



# Opening up – ground floor



-  Stonework visible
-  Stonework revealed through removal of plaster

# Opening up – first floor



20 Vicar Street

21 Vicar Street

22 Vicar Street



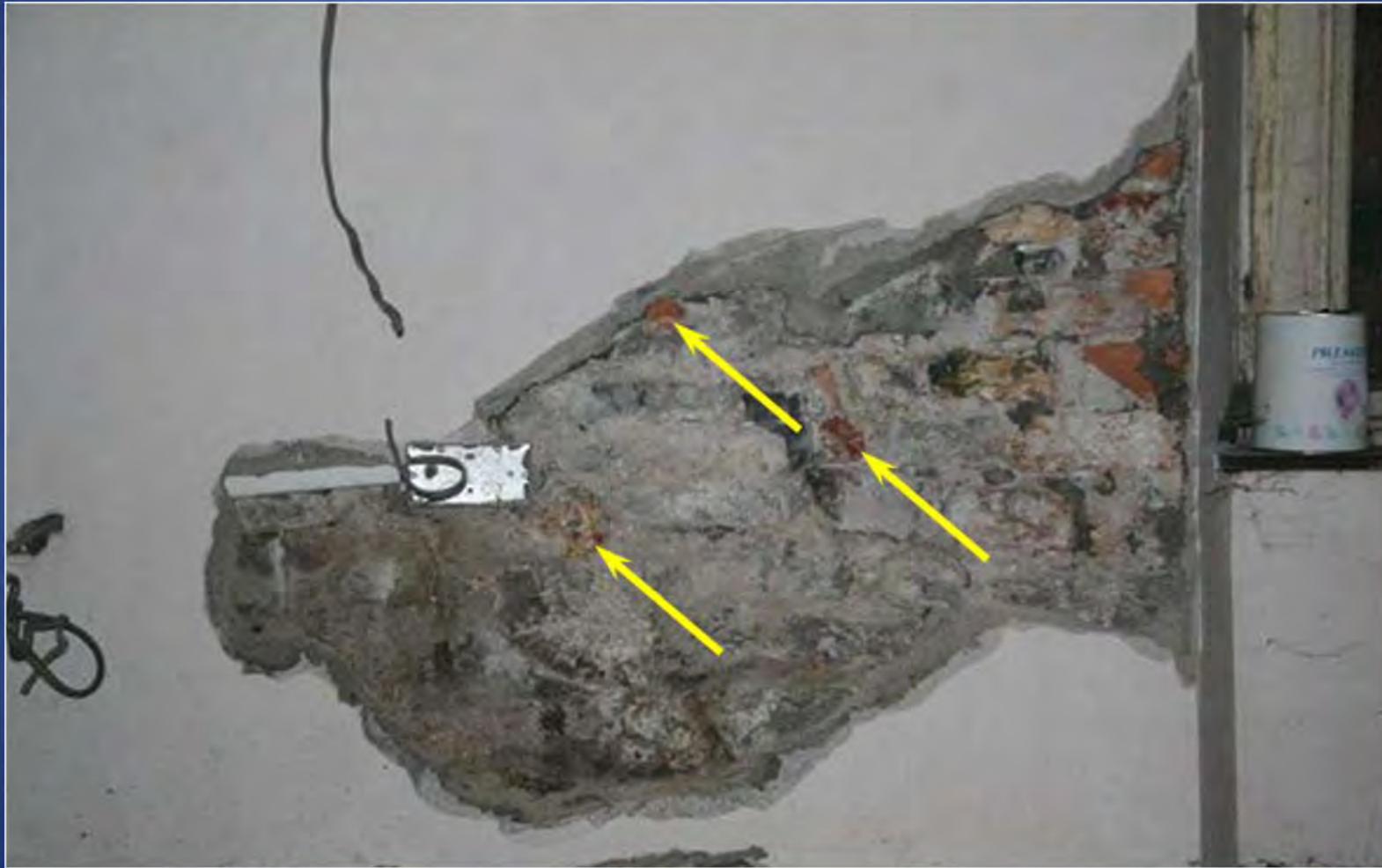
Stonework visible



Stonework revealed through removal of plaster



# Results of opening up



Typical finding - arrows show brick fragments

# Number 22 Vicar Street



Front facade of number 22



# Rear of 22 Vicar Street





# Gable end



Brick fragments present in visible masonry